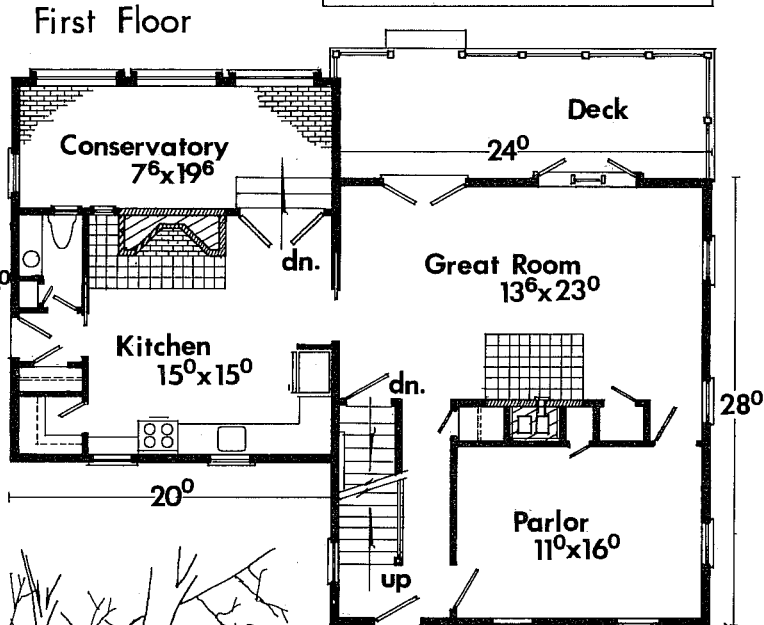
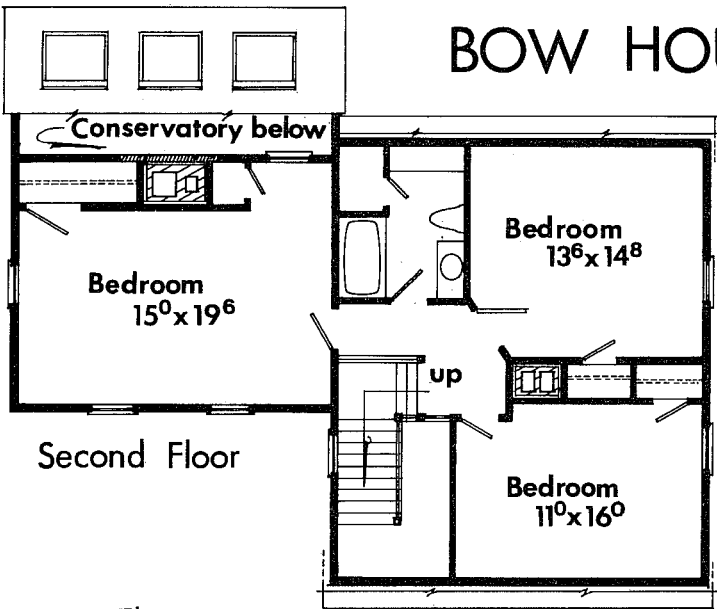


# BOW HOUSE SOLAR ADDITION



This CLEVERLY designed addition will gather up to 55% of the annual heating requirements of this 2000 sq. ft. Bow House. It can generate up to 68% with additional insulating material. The computer used the climate of Hartford, Ct..

Of more importance to us, is that the addition keeps a COLONIAL appearance both interior & exterior. We have used divided lite stationary windows to collect the sunshine.

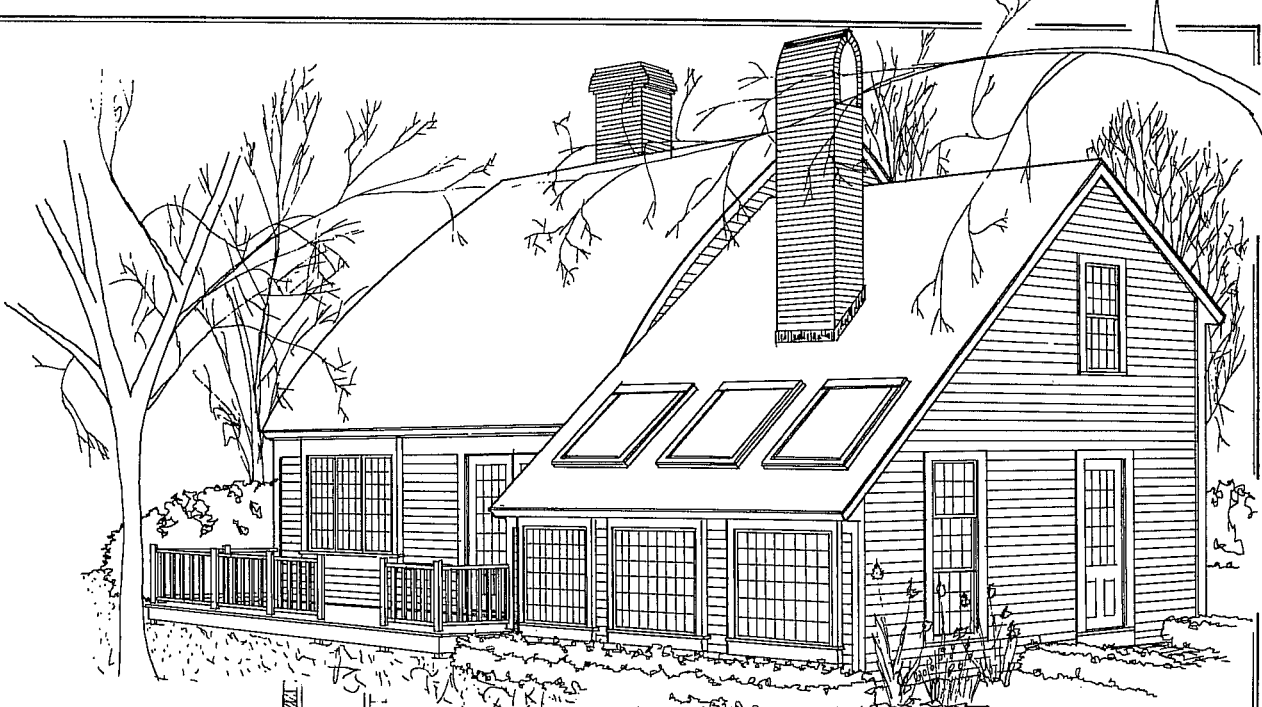
The addition can be designed onto ANY Bow House, (or any house) and, as with every Bow House, changes can be made.

Bow House owners have used every conceivable form of heating; giving us a sort of backhanded expertize in this area.

This house can be computed for your climate, & given the financial inputs, yearly savings & payback periods can be determined.

Send for particulars & support data.





Insulated, raised panel shutters (option) give windows an r-value of 6.5 when used with Bow House wooden storms

12" insulation in ceiling

9" insulation, plus air baffle in rafters

6" insulation in walls

BEDROOM

skylite

insulated slab & brick chimney mass store the sun's heat

Rumford Fireplace: tall & shallow; designed for both heat & charm

KITCHEN

CONSERVATORY

foundation insulation

